



Horizon 2020 Policy Support Facility Specific Support to Montenegro

Kick off meeting

Stéphane Vankalck, Head of Sector 'Coordination of the PSF'
Unit A4 'Analysis and monitoring of national research and
innovation policies'
European Commission, DG RTD

21 June 2018



Horizon 2020 Policy Support Facility

- Launched in 2015
- With the objective to help MS/AC "to improve the design, implementation and evaluation of R&I policies"
- Through mobilising high-level expertise and supporting evidence-based policy-making

PSF Services



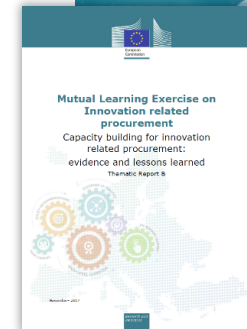
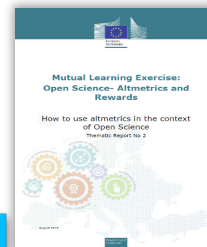
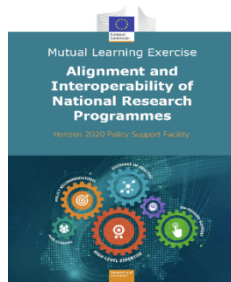
6 Peer Reviews of National R&I Systems

9 Specific Support to Countries



11 Mutual Learning Exercises

PSF Knowledge Center





PSF Specific Support to countries

Aims at providing a set of *concrete* recommendations on how to tackle a specific R&I policy challenge and how to implement the accompanying reforms

Finalised:

Malta on designing a monitoring system for the national R&I strategy

Slovakia & Romania on framework conditions for start-ups

Lithuania on public-private cooperation and attracting R&I investments

Latvia on the reform of the national public funding system and its governance

Bulgaria on performance-based funding

Georgia on prioritisation, selectivity of Funding and science-business Links

On-going :

Tunisia on the promotion of private R&D and on the research priorities

Montenegro on support to start-up ecosystem

To be launched:

Cyprus on public-private cooperation



Key success factors

- High-level country commitment and full engagement of national administration
- Optimal timing in policy cycle
- High-quality experts, with willingness/openness to understand country's specificities ("from analysis towards understanding")
- Start from a clear understanding of country's needs
- Early mobilisation and involvement of stakeholders in the country
- Tailor-made, targeted recommendations



A Team Work

Montenegrin authorities

Ministry of Science: Branka Zizic,
Sasa Ivanovic

Ministry of Economy: Ljiljana
Belada

PSF panel of independent experts

Chair: Daria Tataj

Rapporteur: Totti Könnöla

Experts: Domen Bolle, Jean-
Michel Dalle

European Commission

RTD A4: Diana Ivanova-Van Beers
(until July), Eugenija Puciute (from
July)

RTD C1: Bernhard Fabianek

PSF Contractor

Project Management

Asel Doranova

Senior experts

Analytical support: Maja Bucar

Quality review: Jari
Romanainen

Methodology

Phase 1: **DESIGN** and **PREPARATION**

Selection of experts	Roadmap
Collection of background data and reports	Engagement of all relevant stakeholders



Phase 2: **ANALYSING** and **UNDERSTANDING**

Background analysis: Background Report; Documents provided by the country authorities	First country visit: assessment -> draft recos Second country visit: feedback
--	--



Phase 3: **REPORTING**

Discussion of draft Specific Support report with national authorities of the host country	Final report with recommendations Dissemination event: presentation to all relevant stakeholders
---	--



Final Report

- Executive summary with key overarching policy messages
- Structure aligned to focus areas
- Evidence-based limited set of operational recommendations
- Rationale for the recommendations should be made explicit, in a very clear manner: logical flow from the diagnosis
- Case studies/ country boxes (good practice examples)
- More detailed guidance in annexes



Three focus areas

Legislative changes which need to be made in order to create a startup friendly environment

Proposal of organisational model for a functional startup ecosystem

Proposal for funding scheme(s) for startups and other actors of the startup ecosystem



Thank you

contact: RTD-PSF@ec.europa.eu

<https://rio.jrc.ec.europa.eu/en/policy-support-facility>