

Horizon 2020 Policy Support Facility



MLE Research Integrity

Recommendations for
structures/processes and
dialogue/communications

Final Meeting:
Vilnius, 26 June
2019

Recommendations

Based on

- Discussions at the MLE Kick-off Meeting in Brussels on the 15th November 2018
- Review of existing literature and documentation
- Feedback from 14 countries participating in MLE – RI Country report card
- Discussions at MLE Country Visits in Norway, Greece and France



Recommendations

Recommendation on:
Structures and processes for RI



RI country report cards

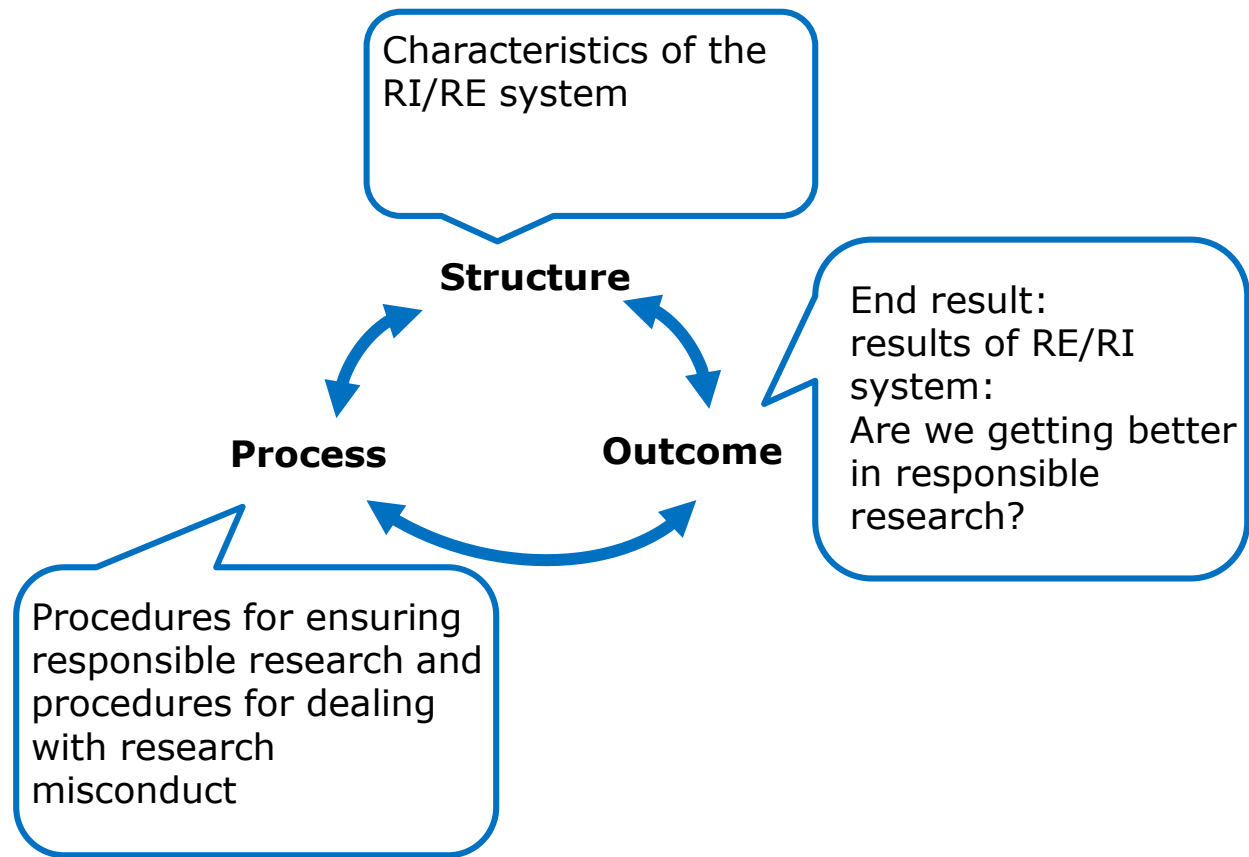
The idea

- 4th World Conference on Research Integrity (WCRI) in Rio de Janeiro in 2015
- Focus Tracks, on Improving Research Systems: the Role of Countries
- Discussion of participants from 17 countries
- How information about an RI framework in a country could be organized
- Tool for:
 - comparing good practices
 - empowering to develop and strengthen RI
 - increasing awareness of RI
 - encouraging research into effective ways to strengthen the integrity of the research systems



RI country report cards

Donabedian model of quality assurance in health care



Country report cards from 14 MLE countries:

- Austria
- Ireland
- Bulgaria
- Lithuania
- Denmark
- Luxembourg
- Estonia
- Moldova
- Finland
- Norway
- France
- Spain
- Greece
- Sweden



RI country report cards

14 countries in MLE on RI

- 5 countries do not have a national RI policy
- 3 countries do not have a national body or bodies for RI
- 3 countries are not represented in the ENRIO
- 9 countries have defined procedures for handling misconduct
- 8 countries do not have specific RI expertise in the form of RI offices or officers although the level of misconduct investigation was institutional or a mixture of institutional and national
- Diversity of bodies and practices in producing RI guidelines and policies



Recommendations – general

The definition of research integrity should be agreed at the national level in order to harmonize the processes at all levels in a country's RI system and increase the security and trust of researchers and other stakeholders in the fairness and objectivity of RI structures and processes.



Example

ENERI – European Network of Research Ethics and Research Integrity

- **Research ethics** addresses the application of ethical principles or values to the various issues and fields of research. This includes ethical aspects of the design and conduct of research, the way human participants or animals within research projects are treated, whether research results may be misused for criminal purposes and it refers also on aspects of scientific misconduct
- **Research integrity** is recognized as the attitude and habit of the researchers to conduct research according to appropriate ethical, legal and professional frameworks, obligations and standards.

ENERI RI&RE manual <http://eneri.eu/>



Recommendations – general

The expertise and skills for RI and research ethics (RE) experts should be harmonized across Europe.



Example

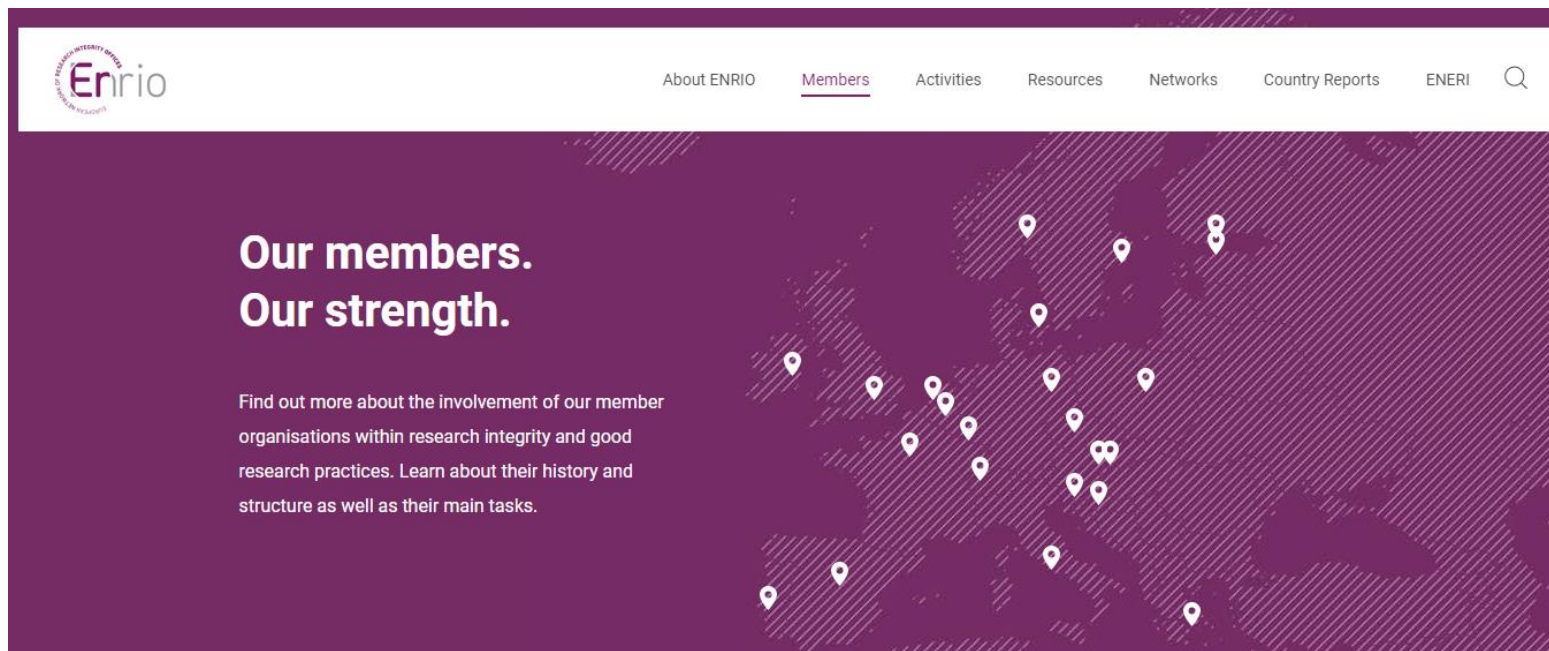
ENERI – Skills for RI/RE expertise

Hard skills	Soft skills	Process skills	Emotional skills
Analytical skills	Communicational	Administrative/ management	Open-mindedness
Scientific skills	Interpersonal	Turning ideas into recommendations/ practice	Independence
Ethical commitment/ thinking/abilities	Eye for details	Decision-making	Societal/cultural/health care awareness/impact
Critical thinking	Ability towards deliberation		Personal commitment
Assessment/ review	Peace-making, conflict- resolution		
	Collaboration		



Recommendations – general

It would be beneficial for RI in the European context that countries join the European Network of Research Integrity Offices (ENRIO).



**Our members.
Our strength.**

Find out more about the involvement of our member organisations within research integrity and good research practices. Learn about their history and structure as well as their main tasks.



Recommendations

Recommendation on:

- a) Establishing productive dialogue among all stakeholders in RI
- b) Ensuring transparency and confidentiality of communication during RI investigations

for
different stakeholders



Recommendations – Academies and ALLEA

Academies should get more involved in promoting RI dialogue:

1. provide the platform for dialogue about RI between different stakeholders
2. promote formal endorsement of European Code of Conduct (ECoC) for Research Integrity by individual institutions



Example



Recommendations – Policy makers

Policy-makers should:

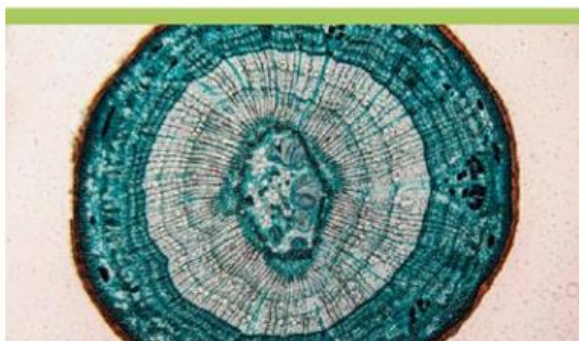
1. provide clear legal and regulatory frameworks for responsible conduct of research and communicate the importance of RI to all stakeholders
2. closely follow the impact of new policies on research integrity, such as privacy protection regulations and open science
3. promote public engagement in assessing the existing and developing new policies for responsible conduct of research



Example



Guidelines for Research Ethics in Science and Technology



Guidelines for Research Ethics in the Social Sciences, Humanities, Law and Theology



Guidelines for research ethics

Science and technology

Social Sciences, Humanities, Law and Theology

Human remains

Internet research

THE NORWEGIAN NATIONAL RESEARCH ETHICS COMMITTEES

The Norwegian National Research Ethics Committees are independent agencies for questions regarding research ethics, and investigation of misconduct, within all subject areas.

- The National Committee for Medical and Health Research Ethics (NEM)
- The National Committee for Research Ethics in the Social Sciences and the Humanities (NESH)
- The National Committee for Research Ethics in Science and Technology (NENT)
- The National Commission for the Investigation of Research Misconduct
- The National Committee for Research Ethics on Human Remains
- Secretariat



Recommendations – Research funding organizations

1. collaborate within and beyond Science Europe to encourage research performing institutions, professional organizations, and other stakeholders to subscribe to RI standard
2. have clear expectations from researchers and their institutions before grant application, during grant proposal evaluation and during grant execution.
3. have clear policies in place, objective bodies and procedures and public report on the findings of RI investigation



Example



Research Integrity in the European Policy Landscape

Open Letter by Science Europe Governing Board

15 December 2016

On 1 December 2015, the Competitiveness Council adopted conclusions¹ highlighting the need to respect fundamental ethical principles and integrity in European research and innovation activities, promoting the topic to the top of the European research policy agenda. Over recent years the policy debate around research integrity has been maturing. The Science Europe Governing Board is delighted that Science



Recommendations – Research performing organizations

1. share experiences and learn from each other at a national and international level. This is particularly important as research is international and institutions from different countries may be involved in RI investigations
2. clearly communicate adherence to research integrity by officially adopting international standards, such as European Code of Conduct for RI, and having clear, publicly available policies about and structure for promoting RI and implementing RI investigations



Example

Cooperation & Liaison between Universities & Editors (CLUE): Recommendations on Best Practice

<http://dx.doi.org/10.1101/139170>

Collaborative Working Group from the conference "Keeping the Pool Clean: Prevention and Management of Misconduct Related Retractions" *Research Integrity and Peer Review* (2018) 3:15
<https://doi.org/10.1186/s41073-018-0055-1>

Research Integrity and
Peer Review

COMMENTARY

Open Access



RePAIR consensus guidelines:
Responsibilities of Publishers, Agencies,
Institutions, and Researchers in protecting
the integrity of the research record

Collaborative Working Group from the conference "Keeping the Pool Clean: Prevention and Management of Misconduct Related Retractions"^{1,2,3,4,5,6,7,8,9,10,11,12,13}



Recommendations – Research integrity bodies

1. be ambassadors of responsible conduct of research
2. have clear and publicly available procedures for dealing with RI allegations and for conducting RI investigations. They have to ensure that their work is transparent and at the same time confidential, to ensure the rights of all involved
3. collaborate with RI bodies from other countries



Examples



ÖSTERREICHISCHE
AGENTUR FÜR
WISSENSCHAFTLICHE
INTEGRITÄT



LUXEMBOURG AGENCY
FOR RESEARCH
INTEGRITY



The screenshot shows the ENRIO website. The header includes the ENRIO logo on the left and a navigation menu with the following items: About ENRIO, Members, Activities, Resources, Networks, Country Reports, ENERI, and a search icon. The hero section features a background image of a diverse group of people with their hands raised in a high-five gesture. Overlaid on this image is the text: **ENRIO**
European Network of
Research Integrity Offices
Below the main title, a smaller line of text reads: ENRIO brings together experts who are dealing with questions about research integrity.



Keep following us at

