



H2020 Policy Support Facility

Mutual Learning Exercise (MLE) on "Research Integrity"

**Louiza Kalokairinou and
Ignacio Baleztena**
DG RTD
European Commission

Brussels, 29 October 2019

Background and Aim of the MLE RI:

- Advancing research integrity is a shared responsibility among all relevant stakeholders.
- Many European countries have adopted laws, codes or guidelines to promote research integrity. Many institutions have adopted relevant policies and structures.
- Such policies, processes and structures are quite varied across Europe.
- **Aim of MLE:** to take stock of current or planned policies and best practices at Member State level and beyond and to share experience on the formulation and implementation of policies promoting research integrity and combatting research misconduct.

Scope of the MLE RI:

4 topics were selected by participant countries:

- **Processes and structures** put in place at national/institutional level for the governance of research integrity
- **Positive incentives** for institutions and researchers to create a widespread culture of research integrity
- Promotion of **dialogue** within and among relevant institutions and the **communication** with the public
- **Training** on research integrity, including types of training, tools and target groups



DREAM

TEAM

**Horizon 2020 PSF
MLE on
Research Integrity
2018-2019**

Independent experts

Göran Hermerén (Chair)
Hub Zwart (Rapporteur)
**Ana Marusic and Daniele
Fanelli** (Experts)

**Participants
14 countries**

(Austria, Bulgaria, Denmark,
Estonia, Finland, France, Greece,
Ireland, Lithuania, Luxembourg,
Moldova, Norway, Spain, and
Sweden)

EU Commission – RTD

Ignacio Baleztena, Louiza
Kalokairinou and Dorian Karatzas
Project Management
Viola Peter (Technopolis)

What is the H2020 Policy Support Facility about ?

Help MS "improve the design, implementation and evaluation of R&I policies" by:



Supporting **evidence-based** R&I policies



Drawing on the combination of the high potential of learning between **peers** (*i.e.* policy-makers) and high-level **experts** advice and assistance

PSF Services

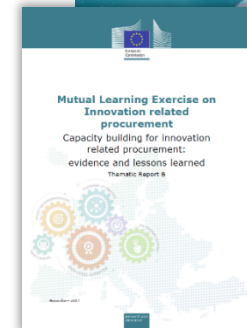
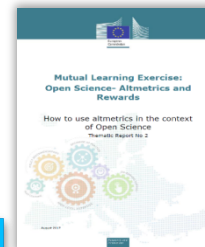
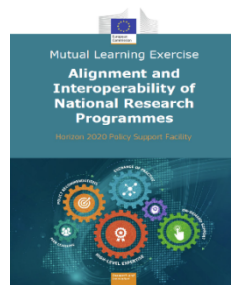


9 Peer Reviews of National R&I Systems
 BG, MD, HU, UA, PL, MT, LT
 DK, EE

12 Specific Support to Countries
 MT, SK, RO, SI, BU, LT, LV, GE,
 TN, MN, CY, AM



Mutual Learning Exercises
 11



MLEs': Main features

1. Address a specific and common R&I challenge

- Focus on policy challenge that is of interest to several volunteering countries

2. Identify good practices, lessons learned and success factors

- Using robust evidence about impacts of the measures and the contextual factors

3. Promote Policy learning

- MS learn from each other exploring specific questions and from experiences in other countries

4. Provide High level advice and assistance from external experts

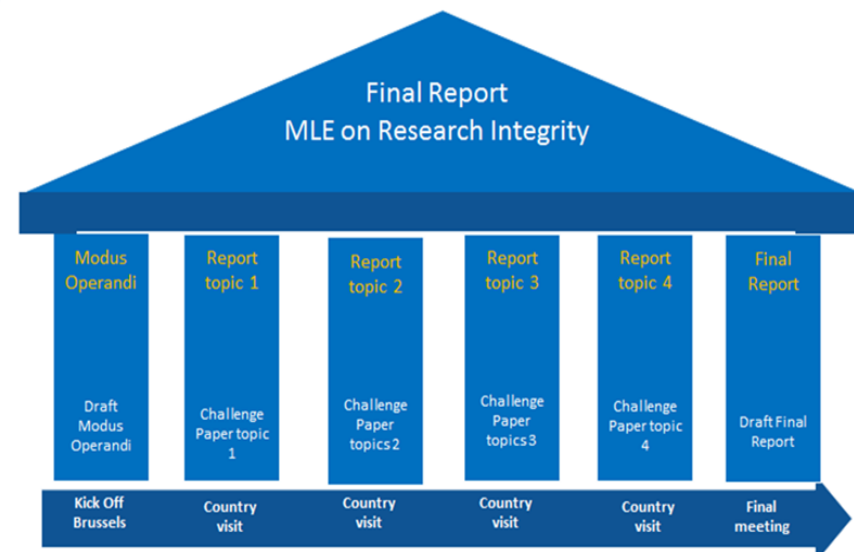
- Policy options and tools for fine-tuning or implementing change in the design of the current policy system

5. Follow a Modular approach

- Workshops, Country visits, etc



Roadmap of the MLE: country visits and inputs for the final report





Check the RIO-PSF knowledge center

Privacy | Cookies | Legal notice | Contact | Search | English (en)

RESEARCH & INNOVATION

European Commission Research and Innovation Observatory – Horizon 2020 Policy Support Facility

European Commission > Research & Innovation > RIO - H2020 PSF > Policy Support Facility

Country analysis ▾ Policy Support Facility ▾ Library Statistics ▾ Thematic Analysis ▾ About ▾ Search

MLE on Research Integrity

Research integrity is a foundation of excellent science and the cornerstone of societal trust in researchers and research institutions. Advancing research integrity across Europe is of the utmost importance to ensure the high quality of science, including reproducibility of research results, and to ensure a fruitful relationship between science and society.

The MLE will focus on the exchange of national practices regarding four priority areas for advancing in the research integrity field, namely, promoting positive incentives, spreading research integrity culture among stakeholders through communications and dialogue, enhancing training in all stages of the research careers and stimulating processes and structures that support research integrity. These four priority areas will be analysed from three different perspectives: institutional, national and cross-border levels.

Date 15 October 2018 to 15 October 2019

Exercise type Mutual Learning

Geo coverage Austria Bulgaria Denmark Estonia Finland France Greece Ireland Lithuania Luxembourg Moldova Norway Spain Sweden

Back to "Mutual Learning"

- **General RIO-PSF Webpage for all PSF activities:**
<https://rio.jrc.ec.europa.eu/en/policy-support-facility>
- **Direct link to the Webpage for the MLE Research Integrity:**
<https://rio.jrc.ec.europa.eu/en/policy-support-facility/mle-research-integrity>



Thank you!

Contact: RTD-PSF@ec.europa.eu

louiza.kalokairinou@ec.europa.eu

ignacio.baleztena@ec.europa.eu