



H2020 Policy Support Facility

Mutual Learning Exercise (MLE) on "Research Integrity"

Ignacio Baleztena,
DG RTD
European Commission

Vilnius, 26 June 2019

What is the H2020 Policy Support Facility about ?

Help MS "improve the design, implementation and evaluation of R&I policies" by:



Supporting evidence-based R&I policies



Drawing on the combination of the high potential of learning between peers (*i.e.* policy-makers) and high-level experts advice and assistance



European
Commission

PSF Services



9 Peer Reviews of National R&I Systems

BG, MD, HU, UA, PL, MT, LT
DK, EE

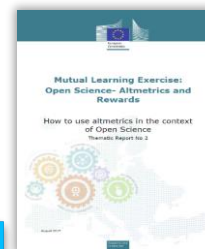
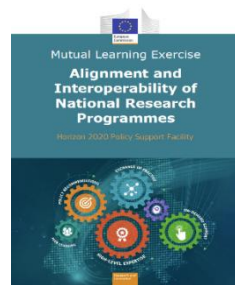
12 Specific Support to Countries

MT, SK, RO, SI, BU, LT, LV, GE,
TN, MN, CY, AM



Mutual Learning Exercises

11



Research and
Innovation

MLEs': Main features

1. Address a specific and common R&I challenge

- Focus on policy challenge that is of interest to several volunteering countries

2. Identify good practices, lessons learned and success factors

- Using robust evidence about impacts of the measures and the contextual factors

3. Promote Policy learning

- MS learn from each other exploring specific questions and from experiences in other countries

4. Provide High level advice and assistance from external experts

- Policy options and tools for fine-tuning or implementing change in the design of the current policy system

5. Follow a Modular approach

- Workshops, Country visits, etc

Context of the MLE RI:

- In December 2015 the Council of the European Union put research integrity for the first time on its agenda and adopted Conclusions recognising “**research integrity** as the **foundation of high quality research** and as a **prerequisite for achieving excellence** in research and innovation in Europe and beyond”
- The Council of the EU has invited all actors involved “to **define and implement policies to promote research integrity** and to **prevent and address research misconduct**, including questionable research practices.”
- Research integrity is a top priority for the EU's research policy:
 - The Commission fostered the **revision** of the “**European Code of Conduct for Research Integrity**” developed by the European Science Foundation (ESF) and All European Academies (ALLEA)
 - The Commission **funds research projects** aiming to explore the different dimensions of research integrity and **promotes cooperation** and exchange of practices
 - Many **European countries have adopted laws, codes or guidelines**, aiming to promote research integrity and prevent research misconduct

Scope of the MLE RI (I):

- However the policies, **structures are quite varied** among European Countries
- France made a request for an MLE
- Focus on the **exchange of practices on how to best design and implement national strategies for promoting research integrity**, procedures to tackle cases of research misconduct and positive incentives for the upgrade of the quality of research
- Participants from 14 countries (France, Denmark, Finland, Sweden, Spain, Bulgaria, Ireland, Luxembourg, Estonia, Lithuania, Austria, Greece, Norway and Moldova)



DREAM TEAM

**Horizon 2020 PSF
MLE on
Research Integrity
2018-2019**

Independent experts
Göran Hermerén (Chair)
Hub Zwart (Rapporteur)
**Ana Marusic and Daniele
Fanelli** (Experts)

Participants
14 countries
(12 Member States and 2
Associated Countries)

EU Commission – RTD
Ignacio Baleztena, Louiza
Kalokairinou and Dorian Karatzas
Project Management
Viola Peter (Technopolis)

Check the RIO-PSF knowledge center



Privacy | Cookies | Legal notice | Contact | Search | English (en) ▼

EU Login

RESEARCH & INNOVATION

European Commission

Research and Innovation Observatory – Horizon 2020 Policy Support Facility

European Commission > Research & Innovation > RIO - H2020 PSF > Policy Support Facility

Country analysis ▾ Policy Support Facility ▾ Library Statistics ▾ Thematic Analysis ▾ About ▾ Search

MLE on Research Integrity

Research integrity is a foundation of excellent science and the cornerstone of societal trust in researchers and research institutions. Advancing research integrity across Europe is of the utmost importance to ensure the high quality of science, including reproducibility of research results, and to ensure a fruitful relationship between science and society.

The MLE will focus on the exchange of national practices regarding four priority areas for advancing in the research integrity field, namely, promoting positive incentives, spreading research integrity culture among stakeholders through communications and dialogue, enhancing training in all stages of the research careers and stimulating processes and structures that support research integrity. These four priority areas will be analysed from three different perspectives: institutional, national and cross-border levels.

Date 📅 15 October 2018 to 15 October 2019

Exercise type ↻ Mutual Learning

Geo coverage ↻ Austria Bulgaria Denmark Estonia Finland France Greece Ireland Lithuania
Luxembourg Moldova Norway Spain Sweden

🔍 Back to "Mutual Learning"

- **General RIO-PSF Webpage for all PSF activities:**
<https://rio.jrc.ec.europa.eu/en/policy-support-facility>
- **Direct link to the Webpage for the MLE Research Integrity:**
<https://rio.jrc.ec.europa.eu/en/policy-support-facility/mle-research-integrity>



Thank you!

Contact: RTD-PSF@ec.europa.eu

ignacio.baleztena@ec.europa.eu