



Horizon 2020 Policy Support Facility Specific Support to Cyprus

Kick off meeting

Roman Arjona, Head of Unit, Chief Economist
Unit A4 'Analysis and monitoring of national research and
innovation policies'
European Commission, DG RTD

15 March 2019



Horizon 2020 Policy Support Facility

- Launched in 2015
- With the objective to help MS/AC "to improve the design, implementation and evaluation of R&I policies"
- Through mobilising high-level expertise and supporting evidence-based policy-making

PSF Services



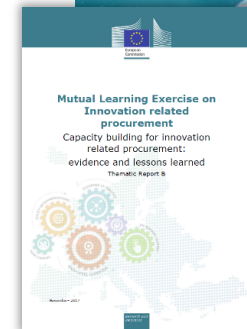
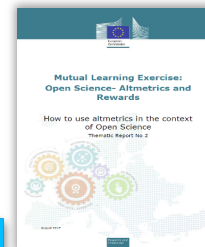
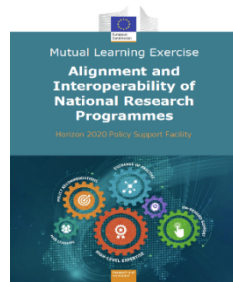
6 Peer Reviews of National R&I Systems

9 Specific Support to Countries



11 Mutual Learning Exercises

PSF Knowledge Center





PSF Specific Support to countries

Aims at providing a set of **concrete recommendations** on how to tackle a specific R&I policy challenge and how to implement the accompanying reforms



Key success factors

- High-level country commitment and full engagement of national administration
- Optimal timing in policy cycle
- High-quality experts, with willingness/openness to understand country's specificities ("from analysis towards understanding")
- Clear understanding of country needs, from the start
- Early mobilisation and involvement of stakeholders in the country
- Tailor-made, targeted recommendations

A Team Work

Cyprus authorities

Mrs Ioanna Kleanthous	Director of Planning, Directorate for Research, Innovation and Lifelong Learning
Mrs Maria Poeti	Officer A', Directorate for Research, Innovation and Lifelong Learning
Mrs Anna Stavrinou	Officer, Directorate for Research, Innovation and Lifelong Learning

PSF Expert Panel and Support Team

Anne-Christine Ritschkoff	Chair
Christopher John Hull	Rapporteur
Bruno Lindorfer	Expert
Geert van der Veen	Expert
Yannis Ioannidis	Expert
Ana Nieto	EC Co-ordinator Officer
Nikos Maroulis	Project Manager, Technopolis



Methodology

Phase 1: **DESIGN** and **PREPARATION**

Selection of experts
Collection of background data and reports

Roadmap
Engagement of all relevant stakeholders



Phase 2: **ANALYSING** and **UNDERSTANDING**

Background analysis: Background Report;
Documents provided by the country authorities

First country visit: assessment -> draft recos
Second country visit: feedback



Phase 3: **REPORTING**

Discussion of draft Specific Support report
with national authorities of the host
country

Final report with recommendations
Dissemination event: presentation to all
relevant stakeholders



Final Report

- Executive summary with key overarching policy messages
- Structure aligned to focus areas
- Evidence-based limited set of operational recommendations
- Rationale for the recommendations should be made explicit, in a very clear manner: logical flow from the diagnosis
- Case studies/country boxes (good practice examples)
- More detailed guidance in annexes



Focus areas

- 1) Identification of the actions to be undertaken by Cyprus authorities in order to **encourage and incentivise the collaboration** between the Research Laboratory Institutions and the private sector in Cyprus and abroad
- 2) **Legal/regulatory changes:** possible obstacles in the laws, regulations and internal regulations of the referred organisations/institutions/departments which would hamper the optimal utilisation of their laboratories by the private sector
- 3) How the Cyprus authorities can help the laboratories to **organise and simplify the access of external partners** to their premises, notably with regards to procedures as well as to technical, contractual and costing aspects
- 4) The **Research Laboratories' accreditation system;** issues for their optimal utilisation
- 5) Role to be allocated to the existing **Technology Transfer Offices.**
- 6) Examination of the potential issues stemming from the possible creation of a **competition** between the government-funded and private companies infrastructures.



Thank you

contact: RTD-PSF@ec.europa.eu

<https://rio.jrc.ec.europa.eu/en/policy-support-facility>