



MISSION AND VISION STATEMENT

EIT Health is a strong, diverse and balanced European Partnership of best-in-class organisations in education, research, technology, business creation and corporate and social innovation.

EIT Health's vision is 'To enable people in Europe to live longer, healthier lives by building and growing businesses to create products and services that progress healthcare in Europe, while strengthening our economy and the sustainability of our healthcare systems.'

EIT Health's mission is: 'By 2030, we'll be Europe's leading innovation platform, facilitating longer, healthier lives and more sustainable healthcare systems.'

KEY FACTS AND FIGURES

Horizon Europe Pillar and Cluster: Pillar III – European Institute of Innovation and Technology

Type of Partnership: Institutionalised – EIT KIC

Coordinating entity: EIT Health e.V.

Total estimated budget: EUR 49.5 m (2021); EUR 59.27 m¹ (2022)

Predecessor under Horizon 2020: Started in 2015

1) KIC budget is approved on a yearly basis based on the assessment of the KIC's Business Plan by the EIT

FIND OUT MORE

EIT Health e.V.
Mies-van-der-Rohe-Str 1C
80807 Munich, Germany

<https://eithealth.eu/>

<https://www.facebook.com/EITHealth/>

<https://www.instagram.com/eithealth/>

<https://www.linkedin.com/company/eithealth/>

<https://twitter.com/EITHealth>

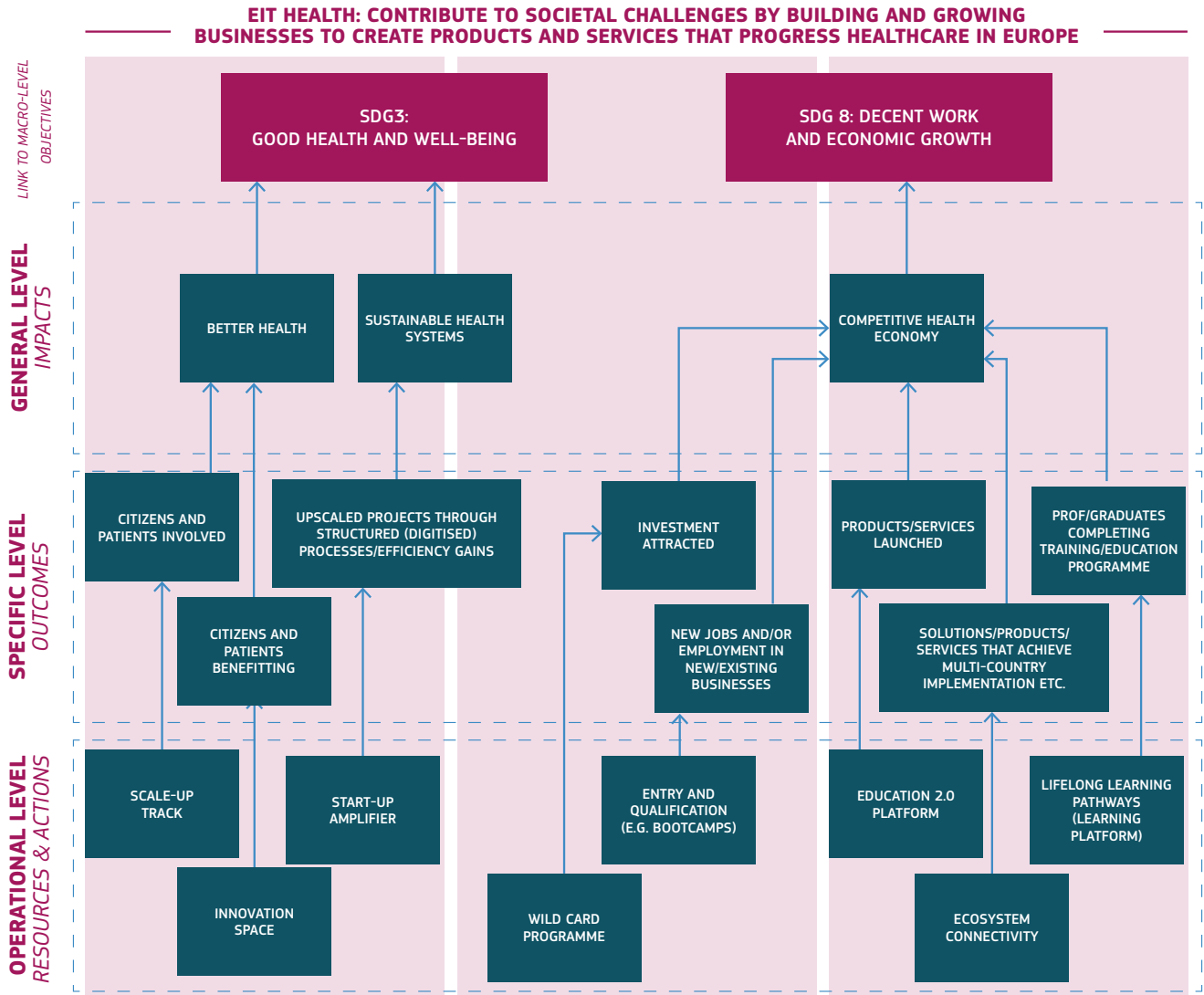
<https://www.youtube.com/channel/UC8W06RVPIATNixFMVyi6Ujw>

<https://vimeo.com/user58674995/videos>

✉ info@eithealth.eu



PARTNERSHIP SPECIFIC IMPACT PATHWAY (PSIP)





PARTNERSHIP'S KEY PERFORMANCE INDICATORS

KPI NAME	UNIT OF MEASUREMENT	BASELINE	TARGET 2023	TARGET 2025	TARGET 2027	AMBITION >2027
RESOURCES (INPUT), PROCESSES AND ACTIVITIES						
# Project partners	Activity partners, which are involved only in implementation of KICs activities (including project partners and wild cards; not including linked third parties).	256	276	296	316	N/A
# Partners from EIT RIS countries	(same as KPI)	77	80	83	85	N/A
# Financial sustainability revenues	€	€11.9 m	€16.3 m	€22.6 m	€30.4 m	N/A
# HEIs involved in EIT and KIC activities	(same as KPI)	20	25	30	30	N/A
OUTCOMES						
# Designed/tested innovations*	(same as KPI name)	18	19	19	16	N/A
# Supported start-ups/scale-ups	(same as KPI name)	103	154	126	109	N/A
# Investment attracted by KIC supported Start-ups/Scale-ups	€	€151 m	€199 m	€191 m	€186 m	N/A
# Participants in (non-degree) education and training	(same as KPI name)	2890	3640	4840	6340	N/A
IMPACTS**						
# Citizens and patients involved	# Citizens and patients involved (ideation, co-creation); where (and if) possible, per disease areas (such as cancer) and range of application (prevention, diagnosis, treatment)	12 800	N/A	25 600	38 400	N/A
# Upscaled projects*** that strengthen healthcare systems	# Upscaled projects*** that strengthen healthcare systems through (cost) efficiency gains and/or by improving the individual experience of care	6	N/A	12	21	N/A
# New jobs or employment created in new businesses	(same as KPI name)	760	N/A	1704	3023	N/A
# Products/services launched	Innovations launched on the market (based on KIC support) (economic)	54	N/A	74	91	N/A

* Decrease due to shift towards projects focusing on efficiency gains.

** Impact KPIs are measured with the baseline set in the year 2022. The figures in the columns for targets for 2025 and 2027 are the goals set for years 2024 and 2027 as 2024 is the closest available measurement year outlined by EIT Health's Strategic Agenda 2021-2027.

*** Upscaled projects are projects where proof exists that they were developed with EIT Health support, and are later used by organisations without further EIT Health support

Remarks:

- KPIs are taken from the EIT Health's Strategic Agenda 2021-2027, chapter 4.2 Results from the Annual KPI targets.
- Baseline is given as 2021 KPI target, defined in the Strategic Agenda 2021-2027 approved in April 2021
- Outcomes and impacts are linked to the KPIs for resources as outlined in Annex 1 KIC Impact of the Strategic Agenda 2021-2027.

SYNERGIES WITH OTHER EUROPEAN AND NATIONAL INITIATIVES

SYNERGIES: STORY 1

Three key areas of collaboration are currently explored together with the European Innovation Council (EIC):

1. strengthening of network capabilities of start-ups through access to stakeholders and expertise;
2. mobilising start-up access to finance and deal flow;
3. establishing further opportunities and joint events.

The first line of collaboration is focused on the participation of EIC start-ups into EIT Health's programmes. EIT Health would fast-track EIC start-ups into the Bridgehead and Bootcamp programmes, with start-up grants and operational costs covered by EIC. Furthermore, all EIC ventures will have access to EIT Health's ecosystem and benefit from the synergies of the other lines of EIC-EIT Health collaboration. EIC-funded start-ups will benefit from tangible results from the careful programme selection based on their specific stage and needs. The second and third lines of collaboration are meant to strengthen ties and the sharing of expertise between EIC and EIT Health as in-kind services.

SYNERGIES: STORY 2

EIT Health and the European investment Fund (EIF) are partnering to operate the Venture Centre of Excellence (VCOE), a public-private co-investment programme to empower finance for small- and medium-sized enterprises (SMEs) in Europe's health sector.

The VCOE connects life science investors with high investment capacities – such as venture capital funding, corporate or industrial firms, technology transfer offices, insurers and more – with highly qualified pan-European SMEs using an exclusive artificial intelligence platform that brings all members together.

Companies in the programme receive support to fundraise and have key access to services provided by EIT Health in support of their Series A, B and up to pre-IPO fundraising rounds.

Please see: <https://eithealth.eu/programmes/venture-centre-of-excellence/>

SYNERGIES: STORY 3

There are also various examples of synergies between stakeholders from within the partnership. There is an overview on the EIT Health web side to cover this: [Case studies in health | EIT Health](#)

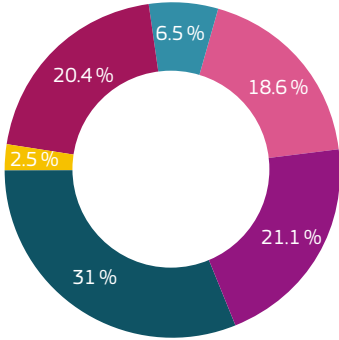
These synergies include:

- supporting the prevention of type 2 diabetes together with Health Integrator
- taking control of movement disorders with more targeted therapy together with DBS Select
- holistic health apps for chronic disease management together with Wefight.



OVERVIEW OF MEMBERS

MEMBERS PER TYPE



- INDUSTRY** Other Industrial and/or profit Private organisation
- UNIVERSITY** University and other higher education organisations
- RESEARCH** Public research organisation (including international research organisation as well as private research organisation controlled by a public authority)
- PUBLIC** Research funders, ministries, regions, cities
- SMEs**
- OTHERS** Non-profit, associations, state companies etc.

GEOGRAPHICAL COVERAGE

